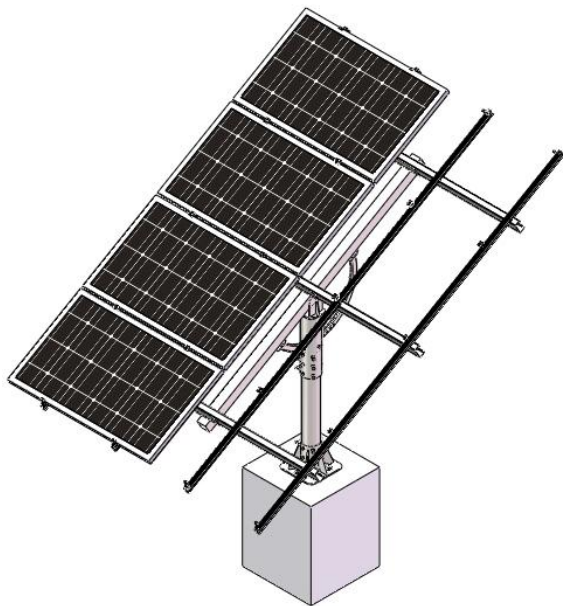


SP8 (Single Pile PV Mounting System——8 Panels):



Technical Data and Requirement:

Technical Data	Requirement
<ol style="list-style-type: none">1. Wind Load: 42m/s.2. Snow Load: 1.4KN/ m².3. Pile Perpendicularity Error Range: $\pm 2^\circ$.4. Warranty: 10 years.5. Installation Angel Error Range: $\pm 2^\circ$.6. Adjustable Angle range: $0^\circ \sim 45^\circ (+5^\circ)$.	<ol style="list-style-type: none">1. Application: Open Ground.2. Rail Material: Aluminum.3. Pile Material: Hot zincification Steel(Q235B).4. Screw Bolt、Screw Nut Material: SUS304.5. Solar Panel: Framed or Frameless.6. Installation Direction: horizontal.7. Design Standard: GB50009-2012,DIN1055,IBC2006,AS/NZS1170.